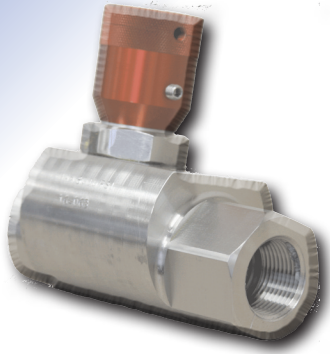


# FC1AH FLOW CONTROLS

**Unidirectional flow with Built-In Check Valve ~ 3/4" to 2"**  
**All Stainless Steel construction for working pressures to 6,000 PSI**



DMIC's newly designed **FC1AH** series brings full 6,000 PSI operating pressure to the masses in stainless steel construction

- Integral 5 PSI poppet check Valve provides free return flow
- Offered from 3/4 to 2+ inch port sizes
- Standard Panel mounting holes
- Fully repairable design and configurable
- Available with alternate needle pitches and profiles
- Fast delivery of Viton and EPR sealing

FC1AH	Nominal Size	Port Thread	Performance Data				Dimensions (inches)										Stainless Steel	
			Flow GPM <sup>1</sup>	Metered Direction		Free Flow		A	B	C	D	E	F	G	H	J (UNF)	F	B
				Orifice Area (sq.in., mm <sup>2</sup> )	Effective C <sub>v</sub>	Orifice Area (sq.in., mm <sup>2</sup> )	Effective C <sub>v</sub>											
FC1AH-0750N	3/4"	3/4" NPTF	25 GPM 95 l/m	0.1080 69,7	2.470	0.348 224,5	7.95	4.07	1.75	3.00	4.63	1.61	2.00	1.75	1.25	1/4	2.00	2.38
FC1AH-0750B		3/4" BSPP																
FC1AH-0750S		#12 SAE																
FC1AH-0750IU		27mm ISO6149																
FC1AH-1000N	1"	1" NPTF	40 GPM 151 l/m	0.2300 148,4	5.250	0.453 292,3	10.35	4.26	2.00	3.56	5.25	1.61	2.25	1.75	1.25	1/4	2.32	2.75
FC1AH-1000B		1" BSPP																
FC1AH-1000S		#16 SAE																
FC1AH-1000IU		33mm ISO6149																
FC1AH-1250N	1 1/4"	1 1/4" NPTF	70 GPM 265 l/m	0.2300 148,4	5.250	0.855 551,6	19.52	4.88	2.50	4.25	6.25	1.61	3.00	2.25	1.50	3/8	3.04	3.50
FC1AH-1250B		1 1/4" BSPP																
FC1AH-1250S		#20 SAE																
FC1AH-1500N	1 1/2"	1 1/2" NPTF	100 GPM 380 l/m	0.2300 148,4	5.250	0.955 616,1	21.82	6.41	3.00	4.88	7.25	3.00	3.50	3.00	2.00	1/2	3.53	4.25
FC1AH-1500B		1 1/2" BSPP																
FC1AH-1500S		#24 SAE																
FC1AH-2000N	2"	2" NPTF	150 GPM 568 l/m	0.2300 148,4	5.250	1.046 674,8	23.90	6.85	4.00	6.13	8.75	3.00	4.50	3.00	2.00	1/2	4.64	5.50
FC1AH-2000B		2" BSPP																
FC1AH-2000S		#32 SAE																

NOTES: (1) Typical flows quoted in U.S. GPM, using 100 SUS Petroleum Based Fluid at 100°



# FC1AH FLOW CONTROLS

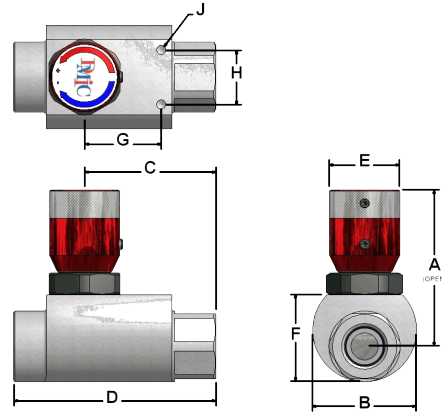
**FC1AH - 1500 S - 2 2 4 2**

**Nominal Size**  
Expressed in 1/1000" units  
Example: 0375=3/8", 1 1/2=1500

Inlet Port Thread	
Standard US/Canada	
N	NPT
S	SAE ORB
Metric Standard	
B	BSPP
Optional Threads (Call DMIC)	
T	BSPT

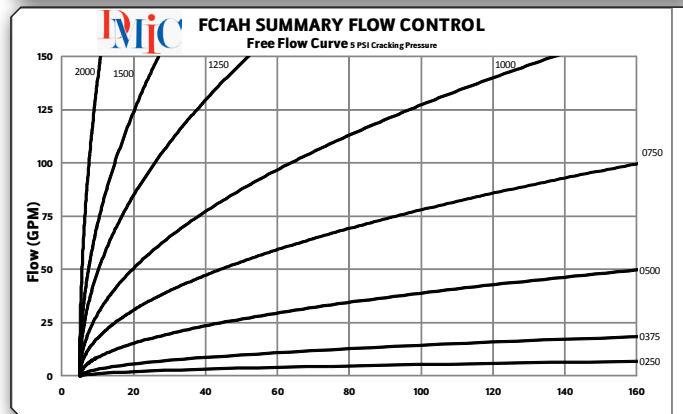
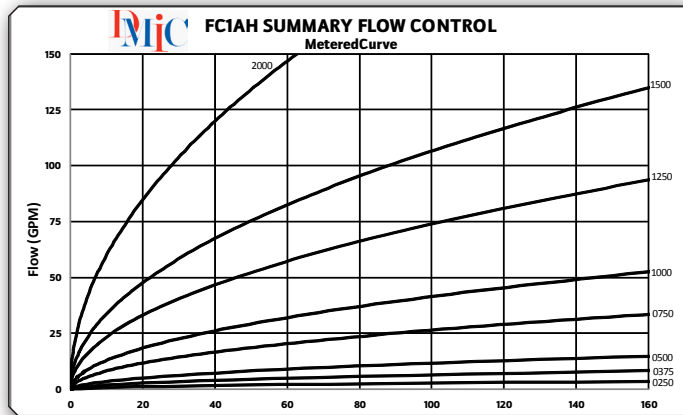
Body Material	
2	Stainless Steel

Poppet & Spring Material	
Code	Description
2	Stainless Steel



Knob Material	
Code	Description
4	Aluminum (standard)
2	Stainless Steel*
* Stainless Steel knob not color coded	

O-Ring Seals	
Code	Description
1	Buna-N
2	EPR
3	Viton
4	Teflon
5	Chemraz



**Due to our policy of continual product improvement, the specifications in this catalog may change without notice. When designing by spec, please request a certified print.**

